



Visit <http://www.chivasom.com/> for virtual tour.

Each room has satellite colour TV, a DVD player and ceiling fans. Air conditioning is available for maximum temperature control and comfort, International Direct Dial telephones, bathrobes, hair dryers, refrigerators and room safes are standard in all rooms. All rooms at Chiva-Som also allow for personalisation for you, the scent burned in oil burners in each room is individually chosen, the amenities in the bathroom are altered depending on your needs and the linen and pillows used within the bedroom can be changed depending on your preference.



OCEAN VIEW

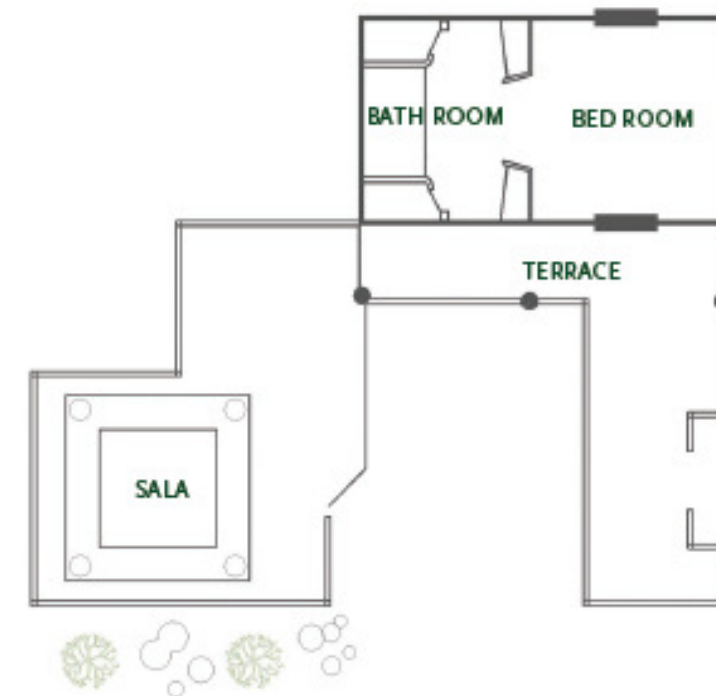
## OCEAN VIEW ROOM - 33 ROOMS (34M<sup>2</sup>)

Each bedroom has its own balcony overlooking the swimming pool, beach and the Gulf of Thailand. These rooms have a bathtub with shower included. Double beds are standard and they can be separated into two twin beds if requested.



## THAI PAVILION ROOM - 17 ROOMS (36M<sup>2</sup>)

These traditional Thai style buildings are set in landscaped gardens overlooking the resort's lake or gardens. Grouped together, three Pavilions share a terrace and outdoor Sala siteseng area. These rooms have a separate shower cubicle from the bathtub. There are two pavilions with an individual private terrace and Sala. These pavilions are more spacious offering guests on longer stays added privacy and comfort.



## ROOM DESCRIPTIONS

### HERBAL SUITE - 2 ROOMS (68M<sup>2</sup>)

Located on the 4<sup>th</sup> floor of the central resort building, these suites provide a separate living room to bedroom area. Adjoining both the bedroom and living room is an outdoor terrace overlooking the Gulf of Thailand. All suites come with Butler Service throughout your stay.



### RAIN FOREST SUITE - 2 ROOMS (68M<sup>2</sup>)

Located on the 3<sup>rd</sup> and 4<sup>th</sup> floors of the central resort building, these suites offer a separate living room to bedroom, a guest bathroom and separate shower to bathtub area. Included in these suites is a separate dressing and wardrobe area. These suites have an extended terrace overlooking the Gulf of Thailand. Butler Service is included throughout your stay.



### FRAGRANCE SUITE - 2 ROOMS (83M<sup>2</sup>)

Located on the 3<sup>rd</sup> floor of the central resort building, these suites provide a separate living room to the bedroom area. Adjoining both the bedroom and living room is a larger outdoor terrace overlooking the Gulf of Thailand. All suites come with Butler Service throughout your stay.

## GOLDEN BO SUITE - 1 ROOM (102M<sup>2</sup>)

Located on the ground floor of the central resort building, The suite includes a large living room, dining area and day area which all lead out to the swimming pool and the suite's private outdoor terrace. This private terrace includes an outdoor shower, table and relaxing area all overlooking the Gulf of Thailand. The bedroom and furnishings are decorated with Thai silk. A guest bathroom is included with the suite plus a circular Jacuzzi in the main bath room. There is a separate dressing and wardrobe area leading from the main bedroom giving guests ample space for personal items. Butler Service is provided throughout your stay.



GOLDEN BO SUITE

## LEELAWADEE SUITE OCEAN VIEW



## LEELAWADEE SUITE - 1 ROOM (192M<sup>2</sup>)

Located in a secluded position on the ground floor of the central resort building, Leelawadee is Chiva-Som's top suite. The suite offers a private entrance and includes a spacious living room and dining room with a separate kitchen to host private dining. The bedroom has an extensive walk in dressing and wardrobe area giving guests ample space for personal items. The main bathroom hosts a large circular Jacuzzi and there is an additional guest bathroom accessible from the living room.

The suite opens out into a large private garden and outdoor terrace overlooking the Gulf of Thailand where guests can enjoy private meditation and yoga sessions. Butler service is provided throughout your stay.