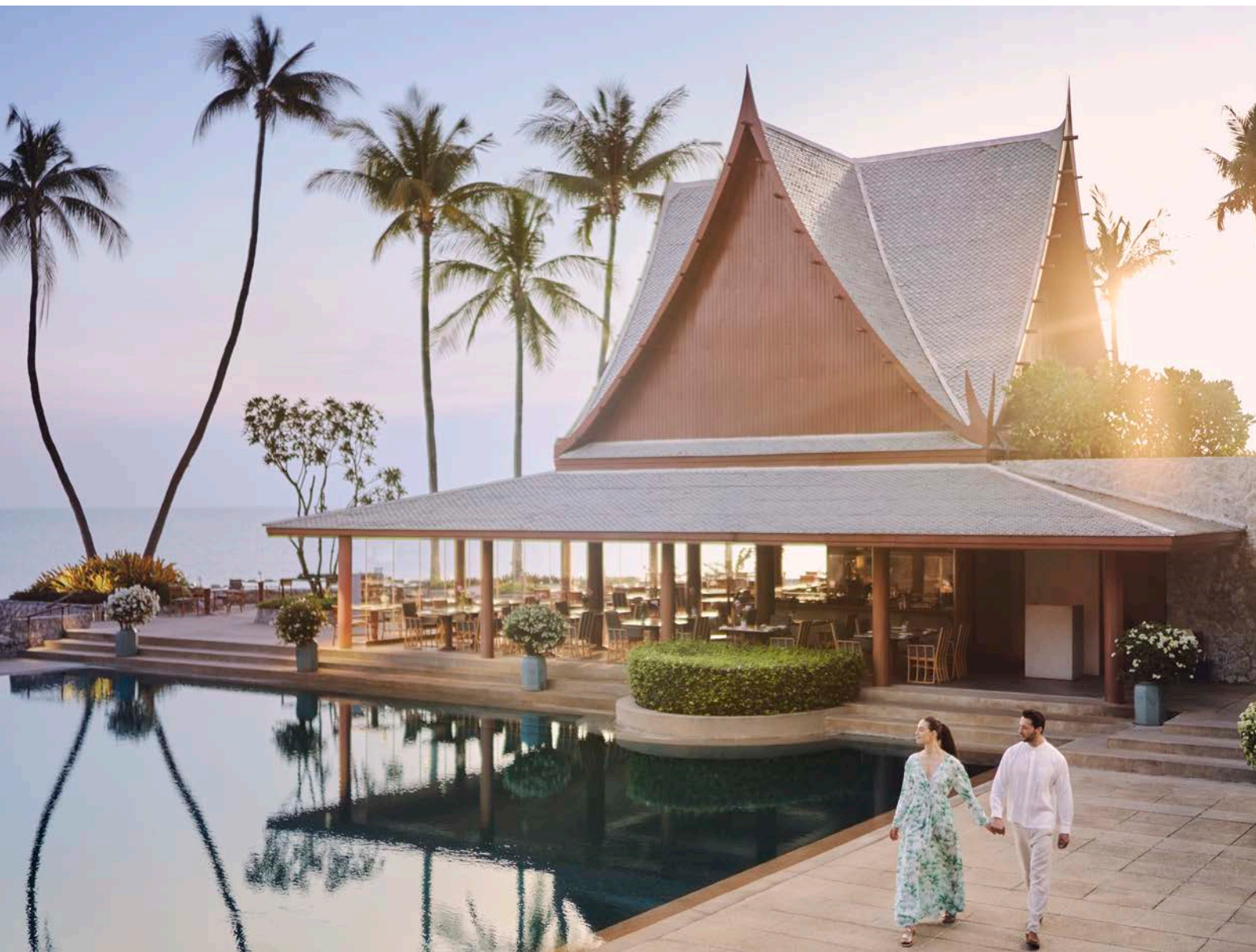




CHIVA-SOM OVERVIEW



The Chiva-Som Story

Chiva-Som is a globally renowned wellness brand pioneering sustainable lifestyle transformation. Meaning ‘Haven of Life’ in Thai, it is a sanctuary where guests can pursue their goals for optimal wellness.

The brand began with the vision of Boonchu Rojanastien for a retreat where he could share his passion for wellness with his friends and family. On 19th April 1995, the flagship was born in Hua Hin, Thailand, on a tranquil 6.7 acres of beachfront.

Since then, the brand has gone on to achieve global acclaim while setting a new benchmark for holistic wellness and sustainable luxury. In 2007, Krip Rojanastien, the current Chairman and CEO, took over, continuing his late father’s vision of hospitality with heart.

Boonchu Rojanastien’s motto, ‘above all, enjoy your life’, continues to inform every element of the Chiva-Som experience, from the range of treatments and therapies to the delicious wellness cuisine and world-class hospitality.

Chiva-Som Hua Hin

Our verdant beachfront resort is a haven for highly personalised wellness journeys. Bringing together Western diagnostic skills and Eastern philosophies, our mission to revitalise the mind, body and spirit (represented by our tri-part logo) is realised in 16 retreats for guests to develop healthy habits and transform their lives. These are complemented by over 200 treatments, therapies and activities.



Key Facts

GENERAL MANAGER
Mr. Vaipanya Kongkwanyuen

LOCATION
Hua Hin, a heritage destination on the Gulf of Thailand, lies 185 kilometres south of Bangkok. Hua Hin first gained popularity in the 1920s when the Thai royal family established a collection of summer palaces there, and today it attracts discerning, like-minded travellers from around the world.

THE SETTING
Guided by Thai style, sustainability and elegance, the architecture was originally conceived by the renowned British architect Jean-Paul Blissett. There is a carefully considered balance of local traditions – inspired by the traditional houses of Ayutthaya – and contemporary Western innovation.

Further enhancements by acclaimed American architect Ed Tuttle redesigned the rooms and all key areas of the resort, including the Health and Wellness Centre, the Bathing Pavilion, Niranlada Medi-Spa, and beachfront restaurant Taste of Siam and The Emerald Room.

Each design has been mindfully curated, balancing Chiva-Som’s core values – holistic wellbeing, warm hospitality, and an approach to sustainability that works in harmony with nature.





Health and Wellness

Chiva-Som offers a deeply personal and holistic approach to wellness by promoting lifestyle transformation and providing the right balance between body, mind and spirit. Western practices and Eastern philosophies are brought together across a comprehensive spectrum of retreats. Each is founded upon six wellness modalities: spa, fitness, physiotherapy, holistic health, nutrition and aesthetic beauty, empowering each and every guest to fulfil their personal goals.

Retreats vary in duration and programme, and are designed to address specific concerns such as weight management, stress or physical fitness. They begin with a consultation with a Health & Wellness Advisor, who guides each guest on their journey of wellness throughout their stay and beyond. Retreats are inclusive of three wellness meals per day, a complimentary daily treatment of choice (as well as those of the chosen programme) and multiple daily group classes of movement and mindfulness.

The Retreats

A TASTE OF CHIVA-SOM

A concise yet comprehensive overview of the Chiva-Som approach, the ideal foundation stone upon which to build a strong and enduring personal wellness practice.

OPTIMAL PERFORMANCE

Designed to help you return to physical fitness or to optimise your current level of performance, this programme combines the benefits of training and physiotherapy.

SPA WELLBEING

This immersive and indulgent experience will leave you feeling pampered inside and out, with a range of luxurious traditional and modern treatments.

YOGA FOR LIFE

Partake in group classes or one-on-one sessions and refine your yoga knowledge and skill with meditation, breathing exercises and traditional cleansing techniques.

NATURE'S EMBRACE

Explore the healing effects of herbal wellness treatments and natural, organic cuisine. Our peaceful beachfront setting in quaint Hua Hin invites you to reconnect with nature.

FITNESS

Aimed at enhancing fitness capabilities while providing guidance on a fitness routine that is individually tailored for each guest. Appropriate exercises and techniques will ensure optimal results, while helping to prevent sports-related and repetitive injuries.

NATURAL RENEWAL

Our experts will explore the roots of your health concerns to create a programme that promotes holistic rejuvenation and renewal through our unique integrated approach. Recover your sense of awareness and inner peace.

ART OF DETOX

A fully personalised programme featuring a specially formulated cleansing diet, which provides a break from repeated dietary abuse and gives the digestive system a chance to restore and renew.

SUSTAINABLE WEIGHT MANAGEMENT

A personal trainer will work with you to help balance physical activity in conjunction with a supportive diet. Each programme is tailored to your needs to promote an end result that not only achieves weight loss, but also provides you with valuable knowledge and understanding.

IMMUNE RESILIENCE

Our team of trainers and therapists will provide guidance on how to build and maintain resilience throughout your stay and beyond.

GUT HEALTH

Our signature detoxifying abdominal massage, probiotic-infused colonics, and Pranayama breathing sessions will promote a feeling of lightness and relaxation.

AGEING WELL

We draw on diet, exercise, and lifestyle choices to help you preserve your health and ability to enjoy life to the fullest.

TOTAL GOLF ENHANCEMENT

Perfect your game while also improving your overall health and fitness, with the ideal blend of play, training and recovery guided by professionals.

CELL VITALITY

This retreat has been carefully created to support guests who have recovered or are in remission from cancer. Daily programmes are crafted to help you regain your appetite through dedicated dietary plans, stimulate physical and mental wellness, and promote cellular health.

CRANIAL RELIEF

For guests who suffer from migraines and life-disrupting headaches. Combining holistic and physiotherapy treatments, you'll discover how to regain stability through meditation, specific exercises and a special dietary plan.

TENSION RELEASE

Carefully designed to help guests who suffer from high blood pressure to regain a restorative balance in life through nutritional consultation, the appropriate use of dietary supplements, and personalised fitness activities.

In addition to the inclusions of each retreat, Chiva-Som provides guests with approximately 200 therapies, treatments, and private and group activities to assist them in their journey towards wellness. These span spa, fitness, physiotherapy, holistic health and aesthetic beauty.





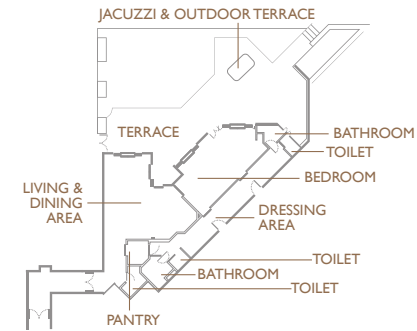
Accommodation

Chiva-Som has a unique collection of 54 exquisite rooms and suites, all of which have recently been renovated with space, comfort and every guest’s wellness journey in mind. There are two main categories – the stylish ocean rooms and suites, many of which overlook the Gulf of Thailand, and the beautiful Thai Pavilions set in lush tropical gardens.

Interiors bring together the best in comfort and wellbeing with the innovative use of Thai teak, bamboo and silk. A selection of artefacts and artworks add harmonious details, with calm and subtle lighting enhancing a sense of serenity. Floor-to-ceiling doors and windows lead onto balconies and terraces with private seating areas providing guests with a peaceful nature escape.

All room types include a complimentary wellness minibar and Butler service, with elevated Butler service for suites.

Each room is designed to cater to different tastes.

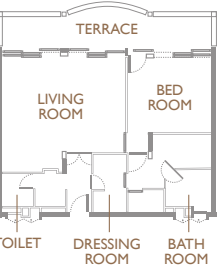


LEELAWADEE SUITE

147 sqm

Leelawadee offers abundant space both inside and out, as well as a jacuzzi on its private terrace. It is our largest and most exclusive accommodation, but it is its privacy and the comforts of home that make it our most prized suite.

What Makes this Room Special?
Created to feel like a home away from home, this well-appointed suite is thoughtfully designed to include his and her bathrooms and dressing rooms, the dining area, plus a jacuzzi and private garden.



CHAMPAKA SUITE
104 sqm
The Champaka Suite has been designed to instil in its guests an explicit sense of space, freedom and positivity. The Suite enjoys an ocean view of the Gulf of Thailand which extends to the horizon.

What Makes this Room Special?
A perfectly proportioned and spacious living area located at the heart of the building, offering sea views on both sides and a stunning seascape that leaves a lasting impression.



GOLDEN BO SUITE
102 sqm
The view at sunrise of the ocean from the private terrace of this, Golden Bo Suite suite, is stunning. Guests can also easily access the outdoor pool and Taste of Siam restaurant.

What Makes this Room Special?
The highlight of this suite is the unforgettable experience of watching the sunrise over the sea from your private balcony. It also offers convenient access to the outdoor swimming pool and the Taste of Siam restaurant.



JASMINE SUITE
89 sqm
In the blissful Jasmine Suite, the ocean is always in view. Guests are able to access the private terrace from both the bedroom and the separate living room.

What Makes this Room Special?
The suite faces east, welcoming the morning sunlight into the balcony and bedroom. A connecting door from the living area provides direct access to the adjoining Ocean Room, offering added flexibility and space.



PATCHOULI SUITE
70 sqm
The Patchouli Suite benefits from elevated top-floor views. Its open-plan lounge and dining area have been designed with comfort in mind.

What Makes this Room Special?
This corner suite on the top floor offers complete privacy, featuring a spacious balcony with a sunbed and stunning sea views.



JUNIPER SUITE
68 sqm
The Juniper Suite is situated on the top floor and offers a serene space in which to enjoy Chiva-Som’s beautiful sunrises and surrounding nature.

What Makes this Room Special?
The Juniper Suite benefits from one of the most beautiful sunrise views of the resort.



ANCHAN
63 sqm
The Anchan Room is a soothing and tranquil space. It is a real hideaway in which to take in the beauty of our location and the preciousness of peace.

What Makes this Room Special?
This room is located in the center of the building, it offers a clear and unobstructed view of the sea.



OCEAN PREMIUM ROOM
54 sqm
The Ocean Premium Rooms are inspired by the calm blue waters of the Gulf of Thailand. They feature separate bathroom and dressing room areas.

What Makes this Room Special?
This is the largest of our ocean rooms, and features sea views from the balcony.



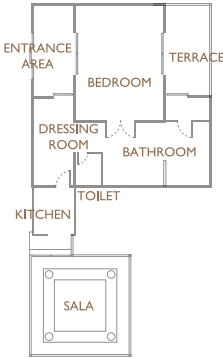
OCEAN DELUXE ROOM
48 sqm
The Ocean Deluxe Rooms are spacious and well proportioned. They feature separate bathroom and dressing room areas.

What Makes this Room Special?
Ocean Deluxe Rooms feature ocean-facing terraces. The ground floor units offer easy access to various parts of the resort.



OCEAN ROOM
34 sqm
From its terrace, each Ocean Room offers views of either the Gulf of Thailand or the resort’s lush, landscaped gardens.

What Makes this Room Special?
The Ocean Room provides all that is essential for a peaceful stay and is conveniently located near the dining venues.



THAI PAVILION SUITE
96 sqm
Situated in the resort’s lush gardens, the Thai Pavilion Suite has been designed with tranquility and nature immersion in mind. It features an outdoor pantry and its own outdoor glass-walled sala.

What Makes this Room Special?
The Thai Pavilion Suite has its own outdoor glass-walled sala for relaxation offering 360-degree views of the surrounding garden, along with a generously sized wardrobe area within the suite.



THAI PAVILION
66 sqm
Surround yourself with nature in our Thai Pavilions, located in the resort’s lush tranquil gardens. Spacious living areas with light and serene colours create a sense of calming relaxation, and sanctuary.

What Makes this Room Special?
Situated within the tropical greenery of the gardens, away from the main building, guests are able to disconnect from the outside world and immerse themselves in nature. This space also includes a generous wardrobe area for added comfort and convenience.





The Health & Wellness Centre

The Health & Wellness Centre includes relaxing public areas, consultation rooms, wet areas and fitness rooms, in addition to 70 treatment rooms.

FACILITIES

- Separate male and female Water Therapy Suites (including sauna, steam room, jacuzzi, plunge pool and relaxation room)
- Bathing Pavilion with exercise pool, Kneipp walk, steam room and hydro-jacuzzi
- Outdoor swimming pool
- Watsu pool
- Gymnasium
- Refunctional studio for fitness and physiotherapy sessions
- Dance studio
- Pilates studio
- Yoga pavilion and sala
- Tai chi pavilion

THE HEALTH AND WELLNESS TEAM

Chiva-Som is proud to provide a multinational, multilingual and highly experienced team of doctors, practitioners, specialists and therapists who speak a range of languages, including Japanese, Chinese and Russian, between them.

DAILY FITNESS & LEISURE ACTIVITIES

Fitness and leisure activities run throughout the day. They range from gentle meditation, mindfulness sessions, pranayama and tai chi to invigorating Thai boxing, aqua-aerobics and Gyrokinesis, to name a few. Chiva-Som's range of yoga sessions suit all abilities and levels of fitness.

Chiva-Som also runs cookery classes in light Thai cuisine, and lessons in making your own wellness products. These, together with visits to Chiva-Som's organic garden and Krailart Niwate, the mangrove preservation and environmental wellness project under the royal patronage of HRH Princess Maha Chakri Sirindhorn, show guests how to incorporate wellness and sustainability into their everyday repertoire.

Please note that certain activities are subject to a supplementary cost.

NIRANLADA MEDI-SPA

Niranlada offers guests and visitors the latest developments in both aesthetic micro-invasive cosmetic treatments and longevity treatment. These include, but are not limited to:

Picosure - the picosecond pulse creates an intense photomechanical impact known as PressureWave™. The PressureWave™ shatters the target particles and results in target clearance with fewer treatments and less fluency, without injury to the surrounding skin. Its uses include tattoo removal, pigmented lesions, acne scars, wrinkles, PicoToning™, melasma management and skin rejuvenation.

CoolSculpting®: a non-invasive fat-reduction treatment. It is an innovative way to contour the body by freezing unwanted fat. It involves no surgery and involves minimal expected recovery time.

Bioplasma: provides skin with a healthy, glowing appearance.

Jetpeel: gently exfoliates, effectively unblocks, cleanses and rehydrates facial skin.

High Frequency Focused Ultrasound: non-invasive face lifting, skin tightening and body contouring with ultrasound energy.

Hyperbaric Oxygen Therapy: A hyperbaric chamber is used for hyperbaric oxygen therapy (HBOT), where guests breathe pure oxygen in a pressurized setting. This therapy enhances healing, reduces inflammation, boosts immune function, and promotes anti-aging, supporting overall health and rejuvenation.

Chiva-Som Wellness Cuisine

EXECUTIVE CHEF

Sinchai Srivipa

The award-winning food and beverage options at Chiva-Som are centred upon a simple proposition: that 'Good Food is Good Life'. Delicious, balanced meals are created to serve as both a foundation of health and a source of pleasure. Dietary requirements should not be viewed as restrictive, but rather an opportunity to experiment, explore and innovate with food. Chiva-Som also practices 'Functional Nutrition', which takes into account every aspect of one's health, diet, and overall lifestyle when giving nutrition recommendations.

Every morning, noon and evening, our accomplished chefs offer guests a blend of Thai and Western delicacies, tailored to all diets and allergy requirements. To ensure optimal health benefits, ingredients are used in their most natural form: organic, GMO-free, whole foods that offer superior nutritional quality. Herbs, fruits and vegetables are whenever possible sourced from our IFOAM-accredited organic gardens.

RESTAURANTS

The Emerald Room

Wellness cuisine elevated to art. The Emerald Room presents contemporary interactive wellness cuisine where you can work with the Chef to design your own pescatarian dish by choosing your preferred 'catch of the day', along with its method of cooking and accompanying sides. In addition, enjoy the delights of our Siam Steamboat, a nourishing Thai hotpot that invites guests to share in a warm, joyful, and healthful dining moment together. Open daily for dinner.



Taste of Siam

Our casual beachfront restaurant, which showcases Thailand's exceptional wellness cuisine, is open for breakfast, lunch and dinner. The open kitchen creates an interactive dining experience. On Saturday evenings, Taste of Siam invites guests to join its renowned barbecue buffet.

*Please note that, while Taste of Siam is open to outside visitors with advance reservation, availability will be in accordance with occupancy.

Orchid Lounge

The open-air lounge surrounded by trickling water is a sociable place to relax between treatments and activities. A delightful afternoon tea and healthy snack are also served daily.





Services

- Guest service agents
- Limousine service
- Shuttle bus to/from the centre of Hua Hin
- Shuttle bus to/from Chiva-Som's organic garden
- Local tours
- Golf tours
- In-room dining
- Butler service
- Laundry (each guest is entitled to four complimentary pieces of laundry per day)
- Complimentary in-room Wi-Fi
- In-house nurse (24 hours)
- Safety deposit boxes
- Currency exchange
- DVD/CD music library

Climate

The weather in Hua Hin is mild and steady all year, with plenty of sun and a maximum temperature of 32°C or 90°F.

March – June: warm season, some high humidity with an average temperature of 28°C.

July – October: rainy season, warm and pleasant, with occasional cooler nights and an average temperature of 28°C.

November – February: cool season, mild days with cool nights and an average temperature of 26°C.

Transportation From Bangkok

Approximate duration:

Private plane – 25 minutes
Chartered helicopter – 60 minutes
Car – 3 hours
Train – 4 hours

Resort Policies

Children under the age of 14 are not allowed at Chiva-Som. However, our sister resort Zual Wellness Resort by Chiva-Som in Qatar is open to families of all ages.

Chiva-Som does not allow smoking in the resort, except in designated areas.

Chiva-Som practices a 'digital detox' policy and does not allow the use of mobile phones, personal computers and electronic devices, except in guest rooms and in the library where complimentary Wi-Fi is available. This policy is also in place to respect the peace, privacy and tranquillity of fellow guests.

Wine and champagne are only available after 18.00.

Guests are not permitted to bring alcoholic beverages or any form of narcotic or illegal substance onto the resort premises.

Chiva-Som is not a suitable facility for individuals dealing with continued substance abuse or unsupervised withdrawal, as our services and facilities do not provide the necessary treatments or medical supervision required for such conditions.

Contact Details

73/4-6 Soi Moo Baan Nong Kae, Phet Kasem Road, Nong Kae, Hua Hin, Prachuap Khiri Khan 77110, Thailand
Telephone: +66 32536536
Fax: +66 32511154
Email: reservations@chivasom.com
www.chivasom.com

Booking Enquiries

Please send your enquiry to reservations@chivasom.com.

Sustainability

From its foundation, Chiva-Som has been dedicated to operating at the world's highest environmental, ethical and sustainable standards at all levels. This pioneering and considered approach to sustainable practices has gained Chiva-Som a reputation as a respected authority on green practices within the travel industry. Corporate Social Responsibility (CSR) initiatives from the resort's dedicated team include economic sustainability, socio-cultural development, environmental preservation and stakeholder wellness. New and innovative initiatives and policies are constantly being explored and employed throughout the resort. These include energy efficiency and conservation practices, wastewater treatment and reuse, freshwater conservation, waste minimisation and recycling, air quality management, and environmentally friendly product usage.

Chiva-Som is also the environmental preservation steward of Krailart Niwate, Hua Hin's only mangrove ecosystem, playing a vital role in protecting and restoring this unique natural habitat.

In addition, we actively align our sustainability practices with internationally recognised standards, further strengthening our commitment to environmental leadership, and our reputation as a pioneer in sustainable wellness tourism.

Awards

- Winner - 'Best Wellness Retreat' - Tatler Best Thailand 2025
- Best 100 Hotels in Asia - Tatler Best Asia 2024
- Winner - 'Travel & Leisure/Spa' - Marie Claire UK Sustainability Awards 2024
- 'Medical Wellness Retreat Global' - Readers' Choice, Global Spa Awards 2023
- 'Wellness & Spa Retreat' - Thailand Tourism Gold Awards 2023
- 'Best Destination Spa in the World' - Condé Nast Traveler's Readers' Choice Awards 2022
- 'Fighting Fit' - Tatler Spa Awards 2022
- 'Thailand's Best Wellness Retreat' - World Spa Awards 2022
- 'Top Destination Spa Resort in the World' - Condé Nast Traveler's Readers' Choice Awards 2021
- 'Gold Award' - Thailand Tourism Awards 2021
- 'Asia's Best Wellness Retreat' - World Spa Awards 2021
- 'Thailand's Best Wellness Retreat' - World Spa Awards 2021
- 'Best Destination Spa' - Condé Nast Traveller (UK) Spa Awards 2020
- 'International Hotels: Best Wellness Retreat' - Travel + Leisure India's Best Awards 2020
- One of the '50 Sustainability & Climate Leaders' - Bloomberg 2020

Social Media

www.facebook.com/chivasomhuahin
www.instagram.com/chivasomhuahin
www.twitter.com/chivasomresort
www.youtube.com/chivasomTH



Online Wellness Services

Much of Chiva-Som's wellness expertise is now available online. You may consult with our professionals via video call and enjoy many of our popular classes from the comfort of your own home.

Your journey will begin with an online health and wellness consultation, followed by a recommendation on the most appropriate sessions based on your individual goals. Our online wellness services include:

CONSULTATION

Naturopathic consultation: our resident naturopaths offer recommendations regarding herbs, nutritional supplements, lifestyle modification, exercise, detoxification and the concept of food-as-medicine to help put your health back on track.

Nutritional consultation: we focus on educating about the basic requirements of your body, where to get your nutrition, and what effect carbohydrates, fats and proteins have on the body in terms of both weight control and support for overall health.



ONE-ON-ONE

Fitness training: a fitness instructor will guide you and develop a fully customised workout based on your goals and preferences, with only basic to no equipment required.

Refunctional exercise: a physiotherapist will analyse your posture, muscle function and movement patterns to create a programme that best suits your body's needs. Refunctional exercise then combines Pilates and the careful use of equipment to ensure a safe and effective workout.

Mat Pilates*: your individual programme will tone muscles and increase flexibility as well as your core stability. The benefit of Pilates mat work is that it can be done anywhere.

Corrective posture exercise: a fitness instructor will help you train for optimal trunk and core stabilisation, stretching and muscle coordination in order to improve your posture and body awareness.

Neurodynamic exercise: this session provides you with the benefits of neurodynamic stretching, a series of postures and movements that enhance mobility and flexibility, with Thai dancing, which has been shown through studies to improve nerve function, power muscles and enhance blood circulation.

YOGA AND MEDITATION

Yoga*: yoga disciplines available include Hatha, Vinyasa, Ashtanga and more.

Meditation: this is not a technique, but rather a way of life and detached observation of the thought process. Our online class will help you with your practice, regardless of level, and provide techniques for you to stay focused.

Pranayama: pranayama will slow your heart and bring a subjective experience of relaxation with the guidance of an instructor, who will provide breathing techniques that can reduce fear and anxiety, and also create space for personal healing and transformational growth.

*Three-day and six-week programmes are also available.



Chiva-Som International Academy



As part of its ongoing dedication to world-leading wellness practices, Chiva-Som operates the Chiva-Som International Academy to train the next generation of wellness practitioners. Located in Bangkok, it delivers highly effective training curricula which are approved by the Thai Ministry of Education and Ministry of Public Health, and accredited by the Confederation of International Beauty Therapy and Cosmetology (CIBTAC). Programmes focus on spa, holistic and aesthetic therapies, and wellness.

CONTACT DETAILS

Ground floor, Modern Town Building
87/104 Sukhumvit 63, Bangkok 10110, Thailand
Tel: +66 (0)2 711 5270 to 3
Fax: +66 (0)2 711 5274
Email: info@chivasomacademy.com
www.chivasomacademy.com

SOCIAL MEDIA

www.facebook.com/chivasomacademy
www.instagram.com/chivasomacademy
LINE: @chivasomacademy





A New Era of Wellness

ZULAL WELLNESS RESORT BY CHIVA-SOM

Managed and operated by Chiva-Som, Zulal Wellness Resort by Chiva-Som in Qatar is the country's largest wellness destination, the Middle East's first full-immersion wellness resort, and the world's first contemporary showcase of Traditional Arabic & Islamic Medicine (TAIM).

Zulal Wellness Resort offers unique therapies encompassing traditional healing principles, incorporating them into the over 400 wellness treatments for complete wellbeing and life transformation, as well as architecture inspired by local heritage, and professional services.

Zulal Wellness Resort has two distinct paths to achieving wellness goals: Zulal Serenity and Zulal Discovery.

Zulal Serenity is the adults-only area of the resort for guests aged 16 and above, offering a calming backdrop to individual journeys of wellness. Zulal Serenity includes 60 suites and villas, each with a private plunge pool or swimming pool.

Zulal Discovery caters to family experiences, making wellness an integral part of the family bond, with programmes customised for multiple generations and different age groups. Zulal Discovery includes 120 rooms and suites, with a number of interconnecting rooms for extended family stays.

CONTACT DETAILS

Building No. 100, Street 319, Zone 79
P.O. Box 70034, Al Ruwais, Qatar
Telephone: +974 4477 6500
Fax: +974 4477 6566
Email: info@zulal.com
www.zulal.com

SOCIAL MEDIA

[@zulalwellnessresort](https://www.instagram.com/zulalwellnessresort)

BOOKING ENQUIRIES

Please send your enquiries to reservations@zulal.com.



WWW.CHIVASOM.COM